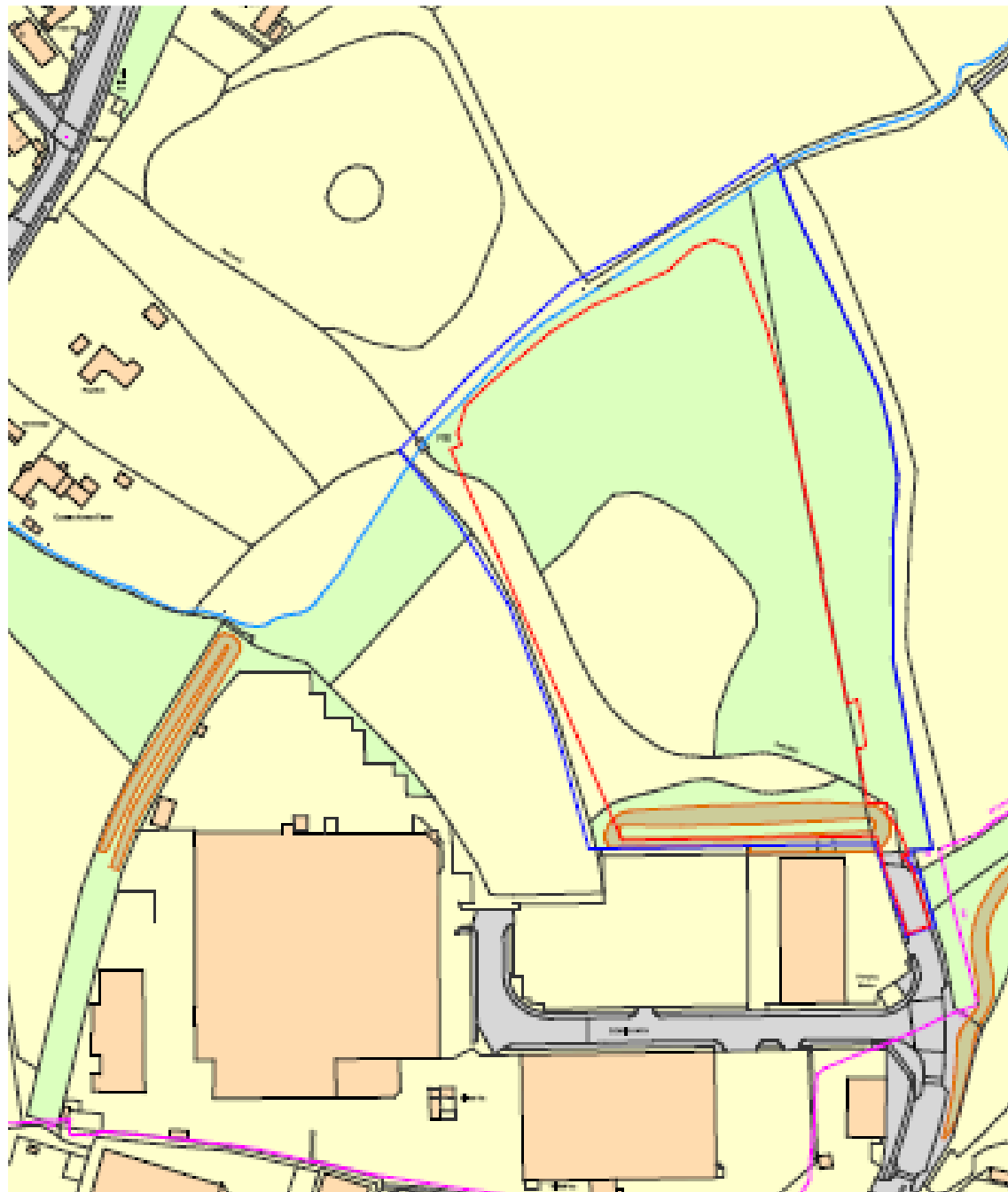
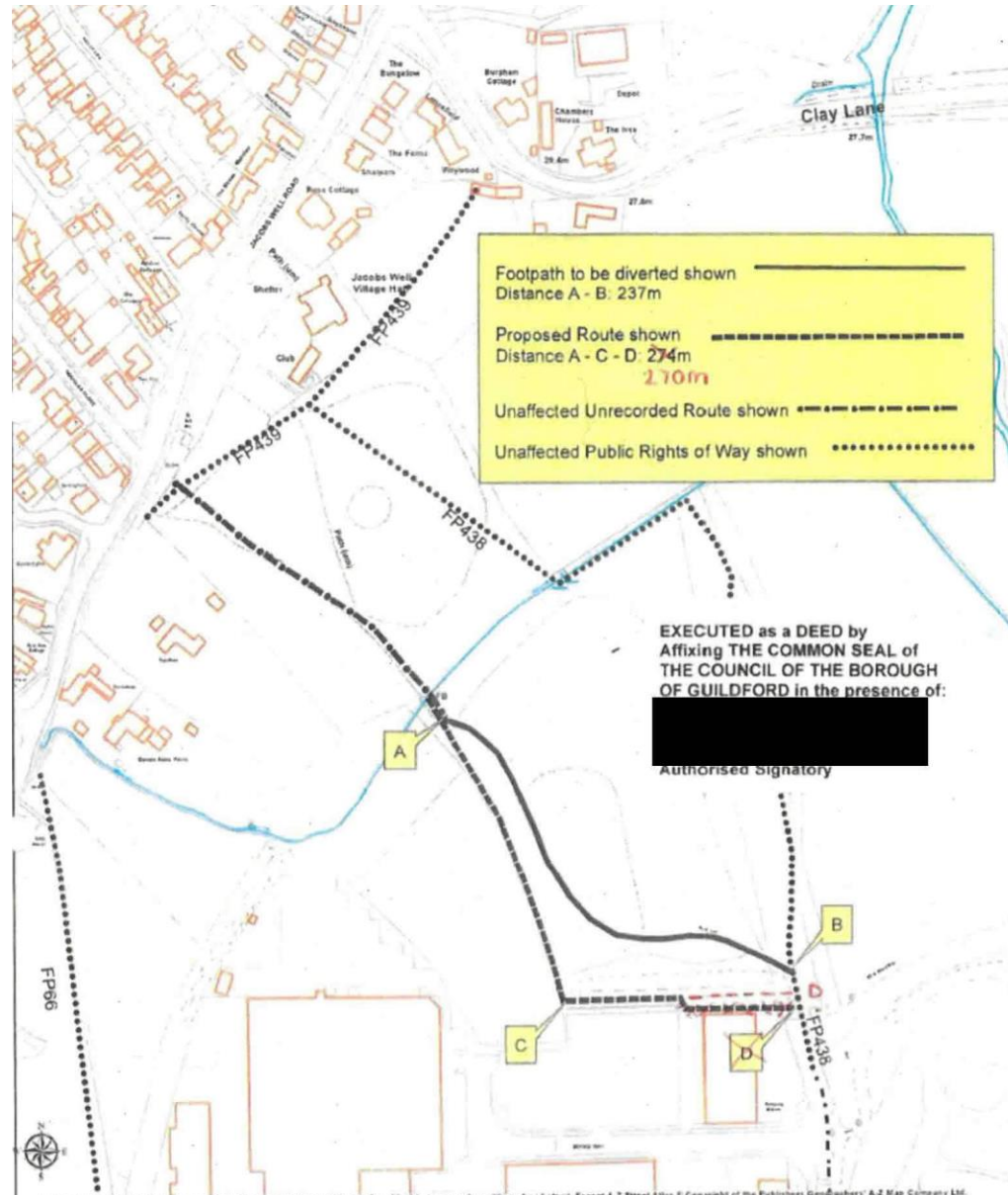


21/P/01882

**North Moors Allotment Site,
North Moors, Guildford, GU1 1SE**







Footpath to be diverted shown
 Distance A - B: 237m

 Proposed Route shown
 Distance A - C - D: 274m
270m

 Unaffected Unrecorded Route shown

 Unaffected Public Rights of Way shown

EXECUTED as a DEED by
 Affixing THE COMMON SEAL of
 THE COUNCIL OF THE BOROUGH
 OF GUILDFORD in the presence of:

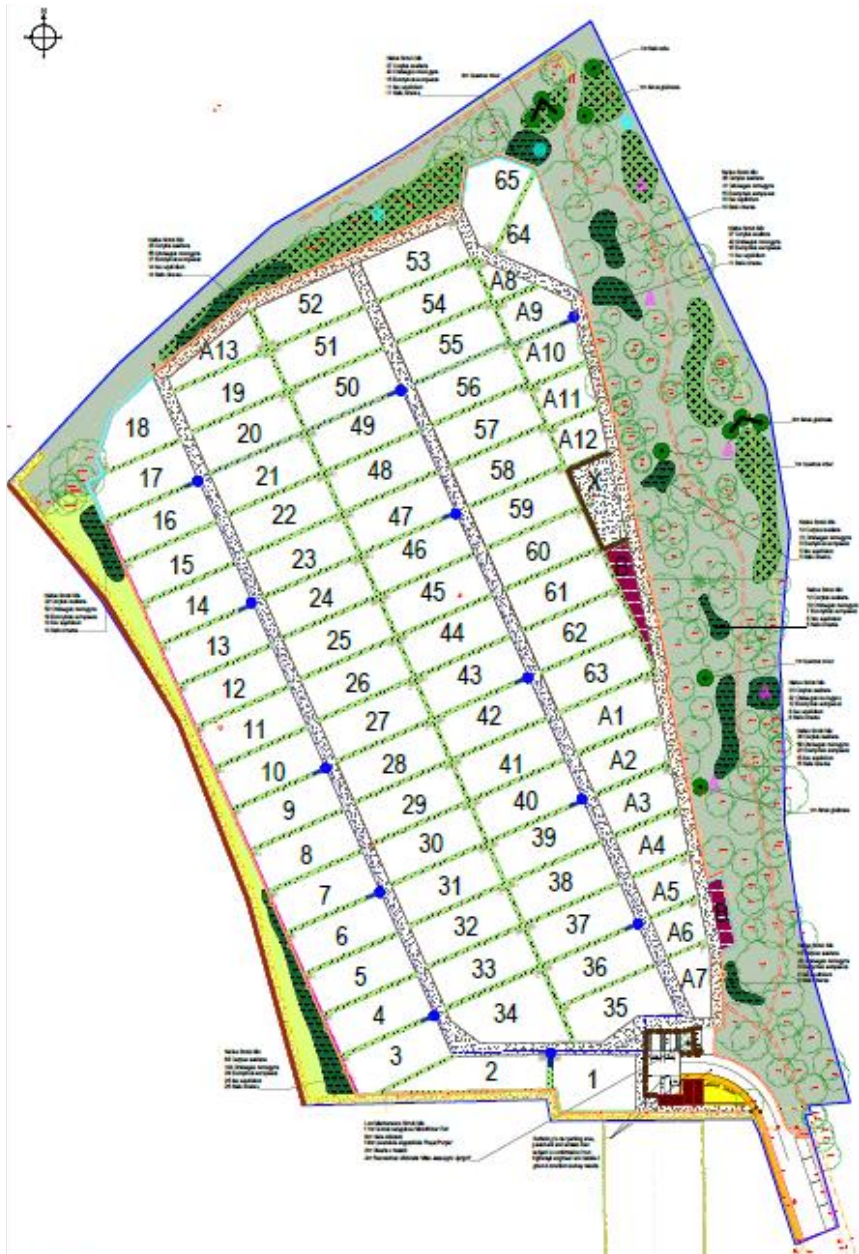


Authorised Signatory



OS terms & conditions
 You are granted a non-exclusive, royalty free,
 revocable licence solely to view the Licensed Data for non-commercial
 purposes for the period during which Surrey County Council makes it
 available. You are not permitted to copy, sublicense, distribute, sell or
 otherwise make available the Licensed Data to third parties in any form.
 Third party rights to enforce the terms of this licence shall be reserved to OS.

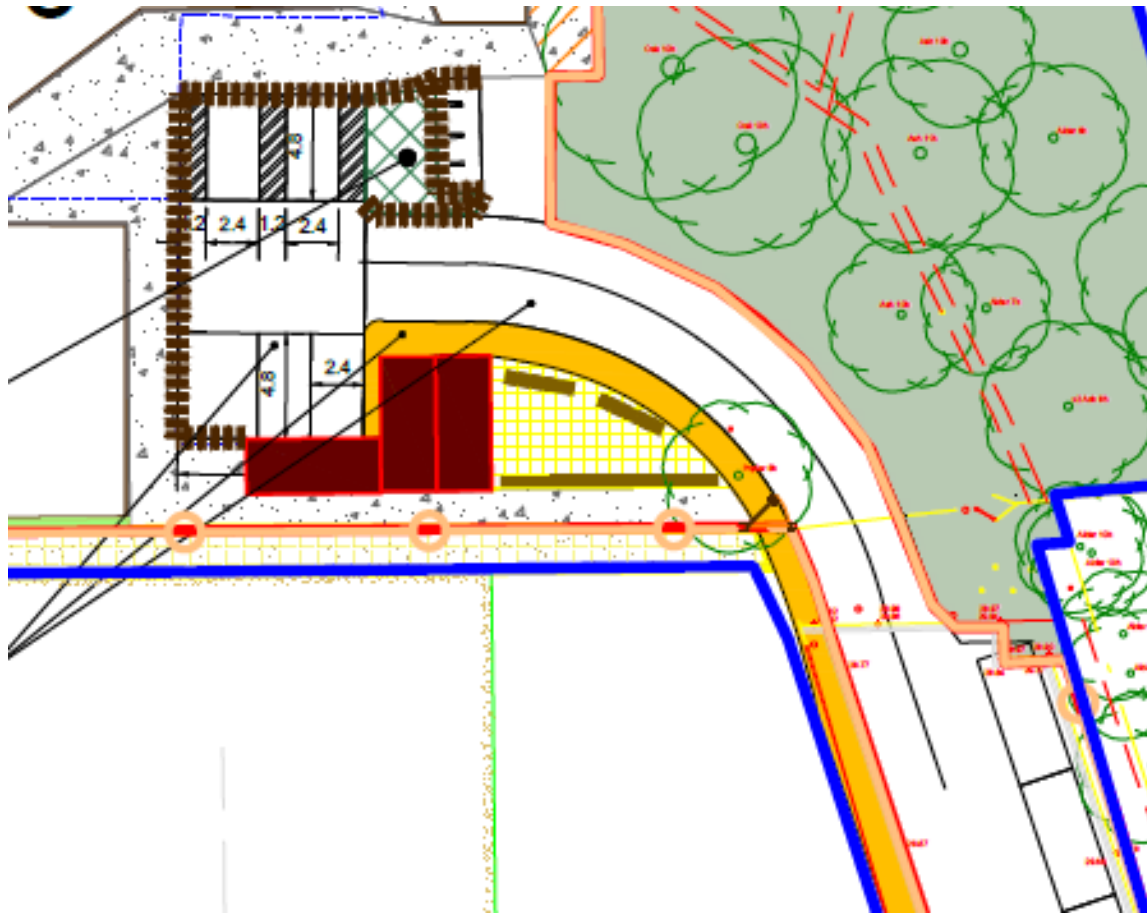
Borough of Guildford
Parish of Worplesdon



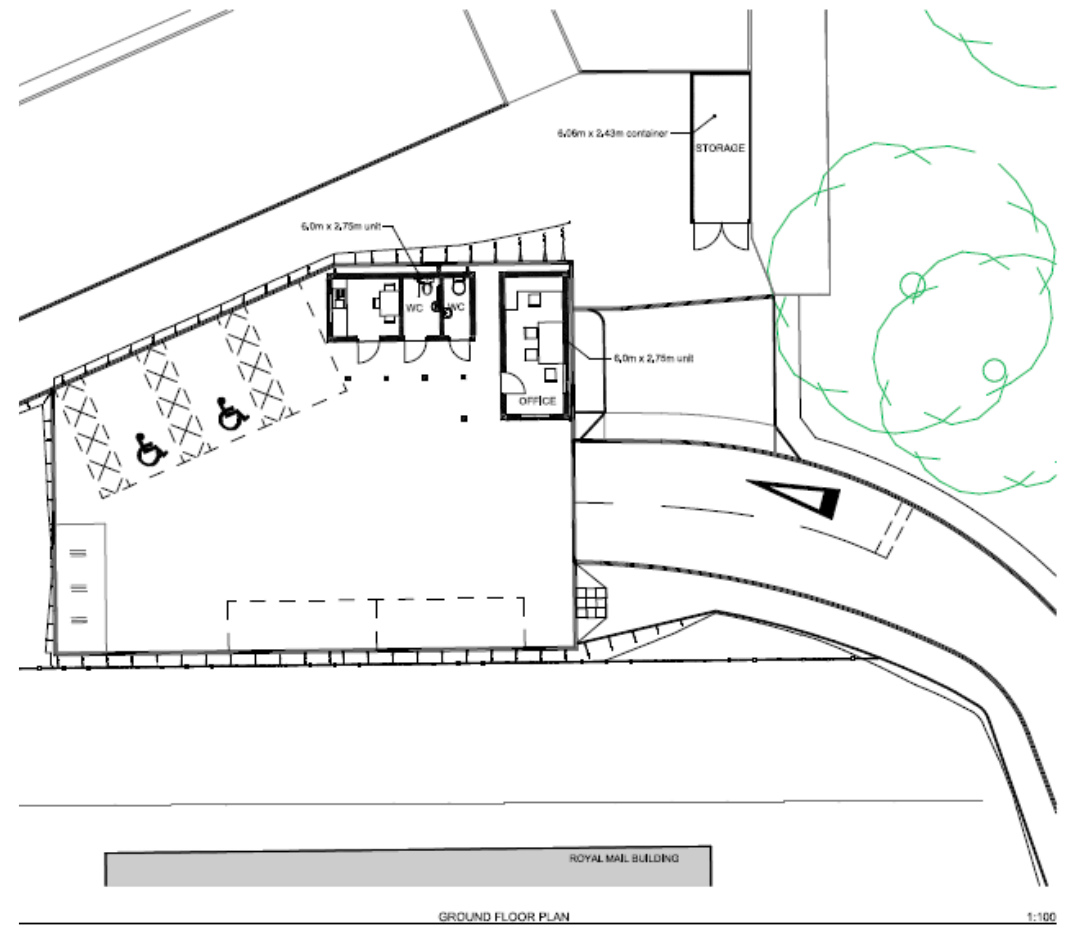
Consented Scheme



Current Application



Consented Scheme



Current Application









